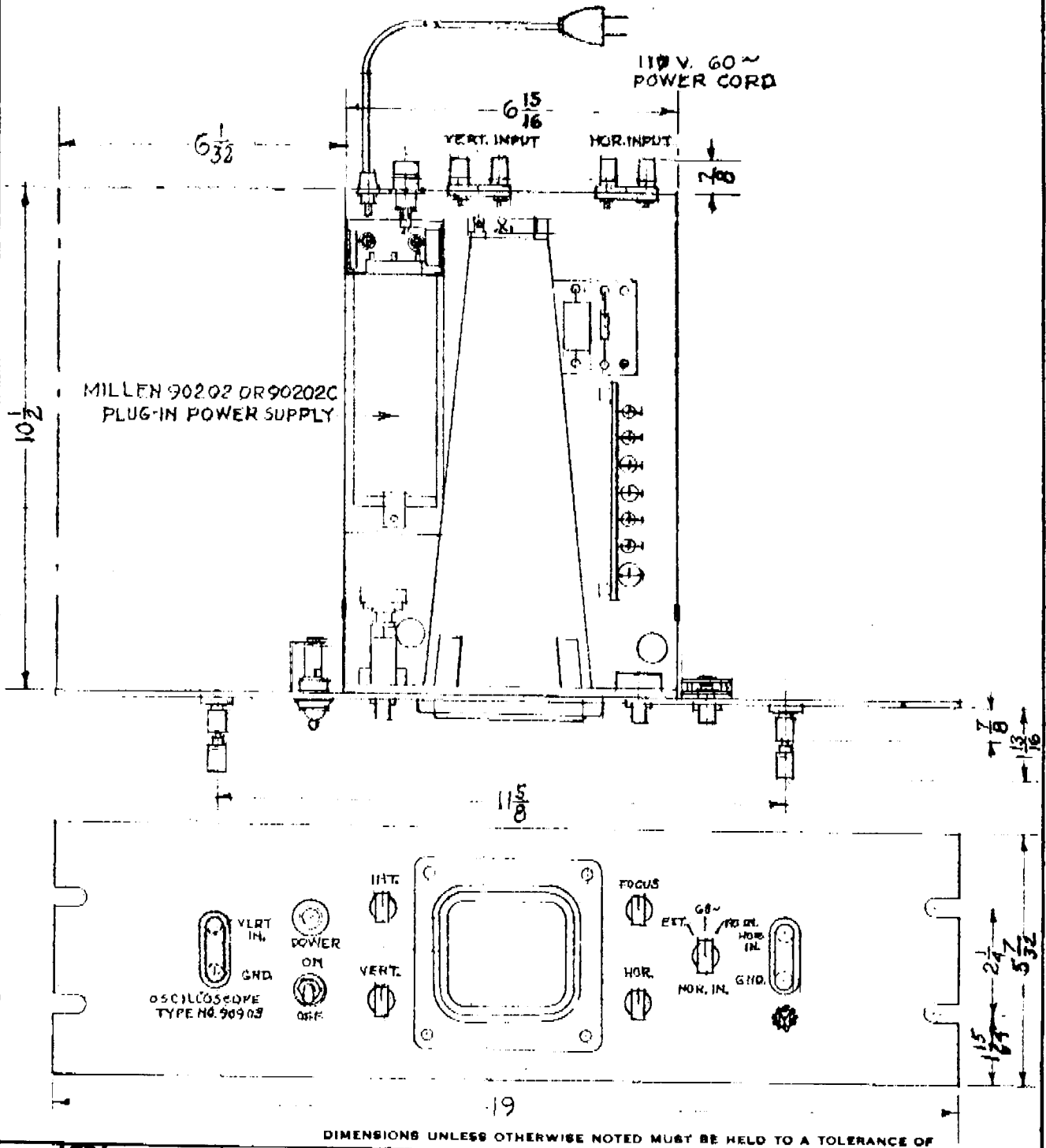


THIRD ANGLE PROJECTION

NOTE: ALL DIMENSIONS FOR REFERENCE ONLY



DIMENSIONS UNLESS OTHERWISE NOTED MUST BE HELD TO A TOLERANCE OF

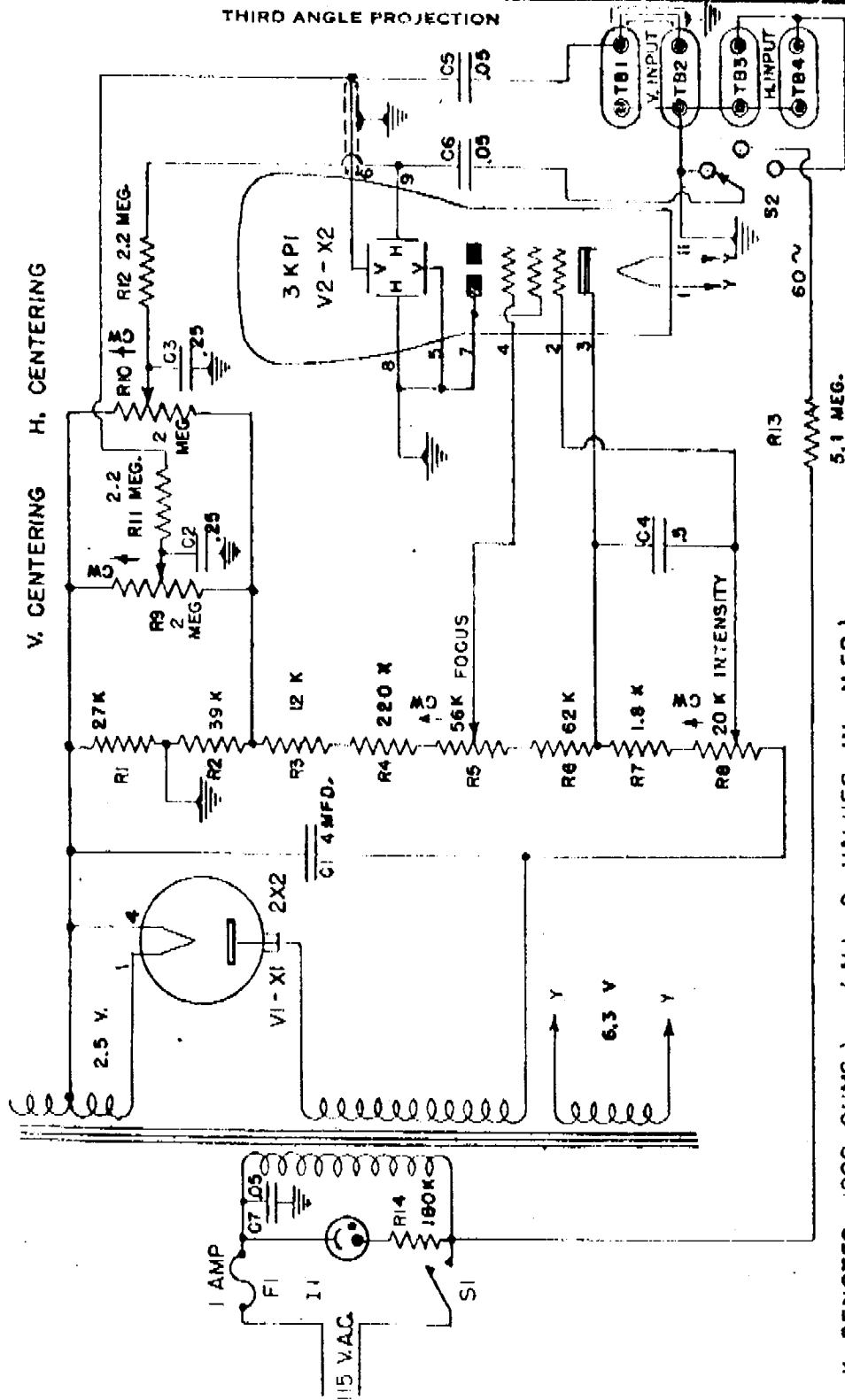
# 3" OSCILLOSCOPE

DESIGNED BY  
 DRAWN BY *N.L.*  
**JAMES MILLEN MFG. CO., INC.**  
 MALDEN MASS., U.S.A.

CHECKED BY  
 APPROVED  
 DATE  
 1-20-69

SCALE  
 $\frac{1}{8}$   
**K 90903-3**

$\frac{1}{24/69}$  1 REDRAWN



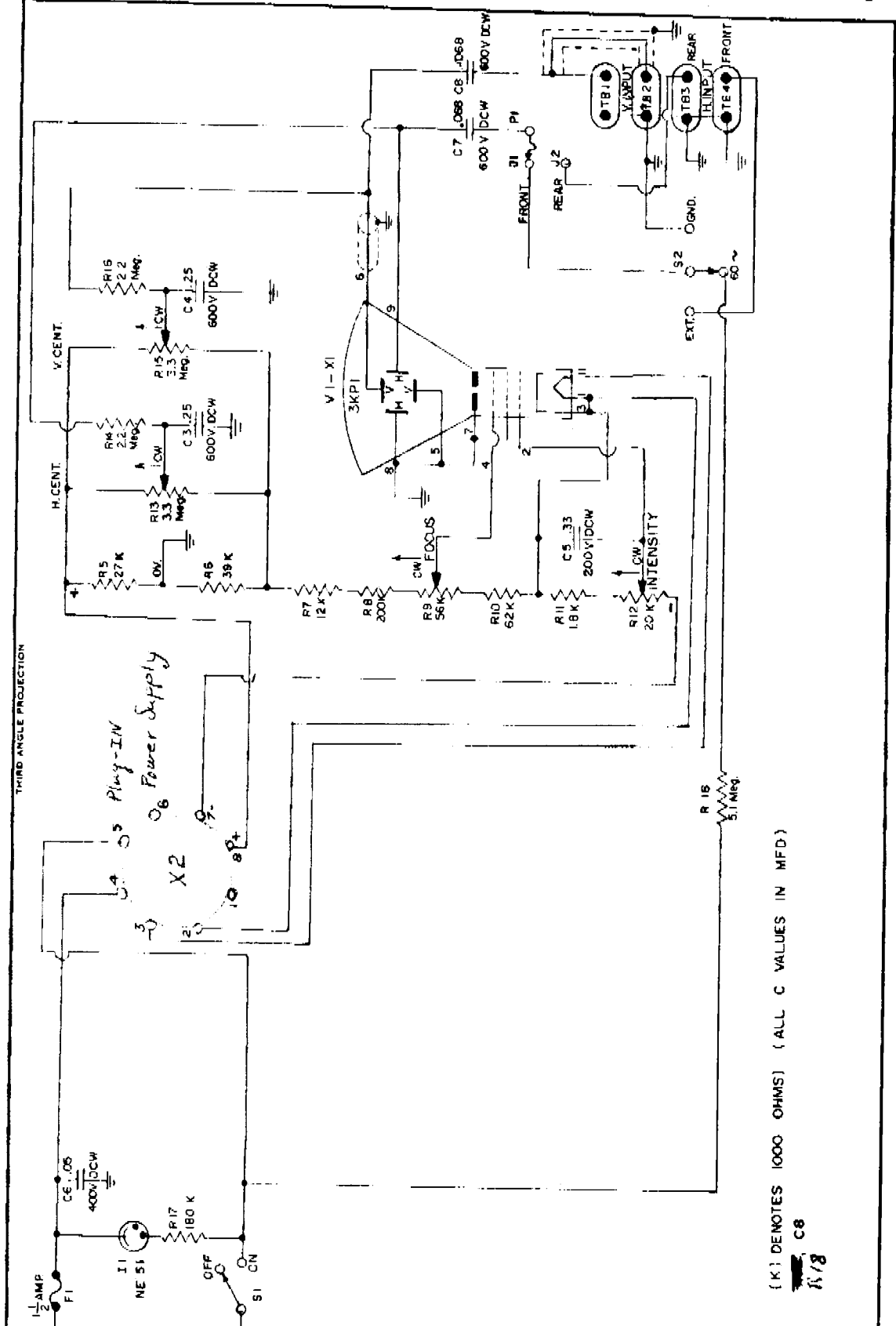
K DENOTES 1000 OHMS) (ALL C VALUES IN M.F.D.)  
 USE THIS SCHEMATIC ON SERIAL NUMBERS ABOVE 132

ALL DIMENSIONS UNLESS OTHERWISE NOTED MUST BE HELD TO A TOLERANCE OF

<b>3" C.R.T. OSCILLOSCOPE</b>	
FIRST MADE FOR	
DESIGNED BY _____	CHECKED BY <i>P.W.C.</i>
DRAWN BY <i>H. G. Taylor, Jr.</i>	APPROVED _____
<b>JAMES MILLEN MFG. CO., INC.</b> MALDEN, MASS., U.S.A.	<b>K90903-1</b>
DATE	8-13-48

PRINTED BY SPANGLING-MORSE CO., BOSTON, MASS. RE ORDER NO. M5041

THIRD ANGLE PROJECTION



Plug-IN Power Supply

(K) DENOTES 1000 OHMS (ALL C VALUES IN MFD)

3<sup>rd</sup> MODULE OSCILLOSCOPE SCHEMATIC

10-70	7	Changed to Power Socket
JUNE 15-67	6	ADDED R19-R22, CHANGED VALUES ON C7 & C8
3-5-64	5	REDESIGNED & REDRAWN

DESIGNED BY R.W.C.  
 DRAWN BY *W.L. Thomas*  
 JAMES MILLEN MFG. CO., INC.  
 MALDEN, MASS., U.S.A.

CHECKED BY *R.D.P.*  
 APPROVED  
 M90903-1

DATE 3-8-66